



## Appendix: Compton Walk Streetscape Design Concept

This appendix describes the streetscape design concept for the Compton Walk which was developed by The Arroyo Group in consultation with representatives of the Compton Station Specific Plan Stakeholders Committee.

### A.1 Streetscape Design Concept and Theme

As a nod to Compton's inspiring musical history, The Compton Walk will include a base streetscape patterning and design intended to resemble a blank musical 'score sheet', upon which the local community will be encouraged to compose and share their own unique 'songs' and expressions about Compton. The experiences along the Walk will be created, maintained, and updated over time by local artists and business owners, expressing the City of Compton's contributions to music, sports, politics, theater, visual arts and fields yet undefined. It will serve as a major attraction to those who wish to come to appreciate and explore the City's culture.

Figure A-1 illustrates diagrammatically how a range of programming and activities can be composed to generate a unique and evolving range of experiences, similar to how notes can be combined to make a song. Punctuating this primary pathway of experiences will be a rhythm of streetscape 'Places' associated with adjacent private development and other civic open spaces that will seek to promote additional moments of connection, discovery, learning, history, cultural expression, and entertainment.

Figure A-1 shows the overall extents and routing of the Compton Walk. Key districts and civic spaces will be connected and a regular placement and hierarchy of programming and space types will promote exploration and discovery.

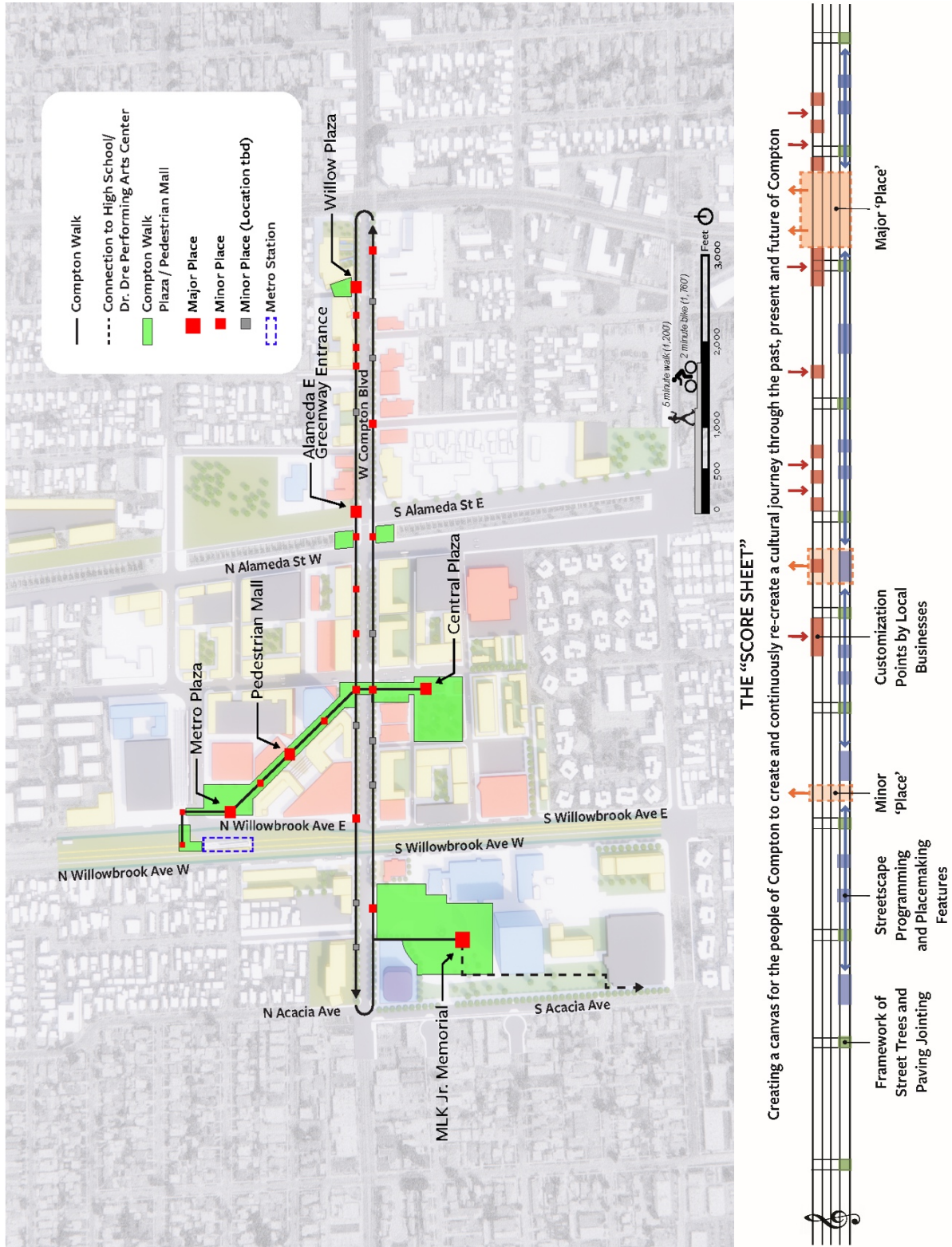


Figure A-1. Overall Compton Walk Diagram (left) and 'Score Sheet' Programming Concept (right).

## A.2 The 'Score Sheet' Base Streetscape Improvements.

The following base streetscape improvements have been proposed along Compton Blvd to create the foundation to a new walkway experience that will evoke feelings one is walking down a musical 'score sheet' and discovering the unique and evolving song which the community will 'compose'.

The base 'score sheet' streetscape improvements include:

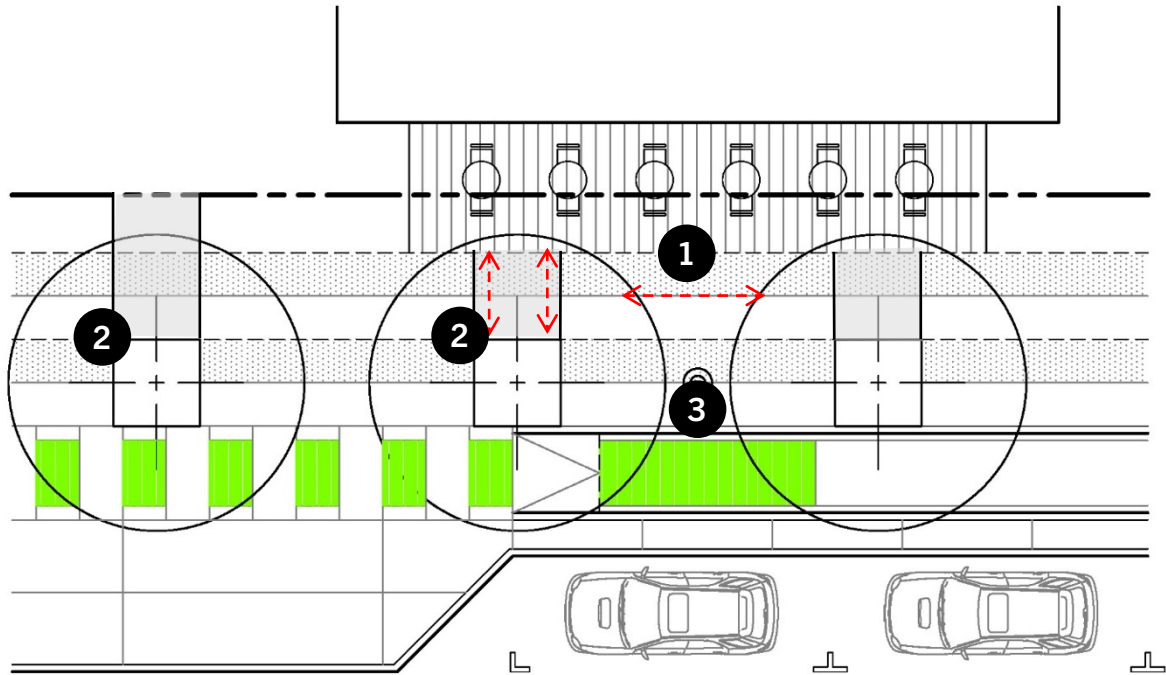
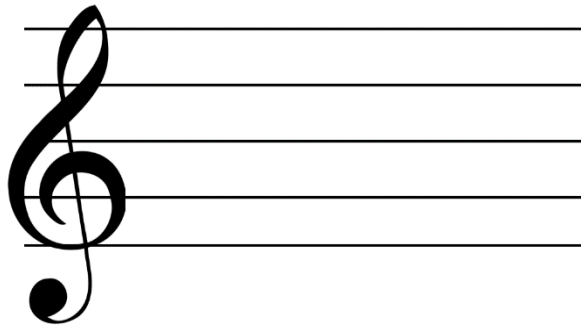


Figure A-2. Typical 'Score Sheet' Streetscape.

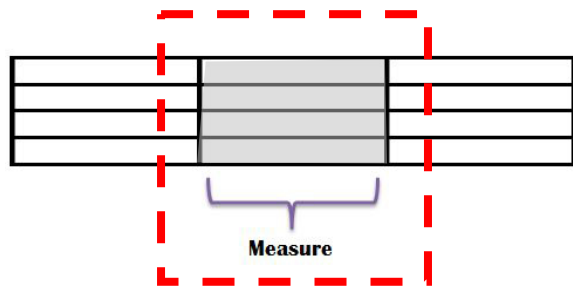
### 1. Linear Walkway Paving Patterning (the ledger lines of the 'score sheet')

Long, linear pavement scoring lines are intended to help maintain a cohesive-looking streetscape along the length of corridor while also providing a framework for the organization and future placement of art and other programming elements (aka 'notes', see below). Sawcut concrete joints will provide a clean, cost-effective, and easily implementable system for patterning the concrete sidewalk surface and will become a simple backdrop for art and placemaking interventions to stand out as featured elements. Ease of maintenance will be another key feature of the proposed sidewalk treatment by utilizing durable concrete materials, that will be easy to clean and repair, with a simple joint patterning that can be replicated across a range of sidewalk conditions and material lifecycles.



## 2. Streetscape Sub-Division Framework (the measures, or bars, of the 'score sheet')

A regularly spaced, repetitive system for segmenting the long direction of the Compton Walk will help further unify the corridor while also providing a sequence of smaller places for scaling up or down a hierarchy of new streetscape moments, experiences, and placemaking (see more under Sections 4.14 and 4.15). At-grade street tree planters and perpendicular-to-curb sidewalk jointing will be the primary sub-dividing features for this layer of the streetscape design.



## 3. Streetscape Furniture (the beat)

New streetscape furniture elements will help provide a starting point to activate and engage people along the corridor. A range of seating types and formations will be important to provide for a variety of user needs, from contemplative individual seating to more social group seating. Other street furniture elements also include trash receptables, pedestrian lighting, bike racks, signage and wayfinding, district branding, and other items TBD. A specific aesthetic direction and/or Supplier for the range of identified furniture should be selected during the next phases for design and in conjunction with a more refined community outreach process.





### A.3 Streetscape Customization: Historic, Art, and Placemaking Features

Building on the base 'Score Sheet' streetscape, the Compton community will be encouraged to compose its own melody of artistic, historical, and interactive elements which will be the focus of a journey through cultural Compton. The process of developing the placemaking will need to be highly inclusive and consider a range of perspectives, weaving different elements and layers together to create a cohesive song of experiences. A strong community engagement process is encouraged to ensure all voices are heard and registered in composing a vision for The Walk.

#### Streetscape Programming and Placemaking Features

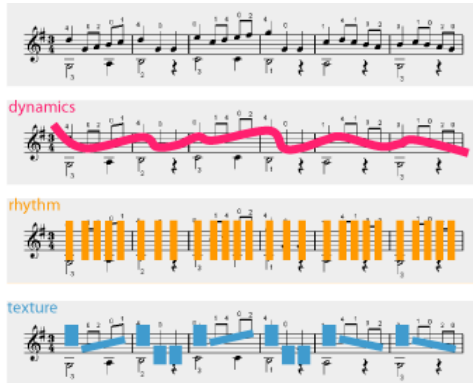
A composition of streetscape programming, art, placemaking, and other ideas will be important layers for Compton Walk to be able to tell its own story and unify an overall walk experience. These layers may include a regular rhythm of elements to hold the streetscape together and other unique, localized placemaking moments to promote further exploration and discovery.

Goals for programming and the development of placemaking along The Walk:

- Develop a range of elements and placemaking that cater to the needs of abutting businesses, the general resident community, the historic community, the creative community, and outside visitors with the goal to serve as broad of a range of user types as possible and in turn increase vibrancy.
- Provide a variety of activities for different types of users, activities and times of day, also to increase vibrancy.
- Balance elements made to pay tribute to the past with creative, forward-thinking elements and messaging for the future.
- Educate people about the lesser-known stories of Compton's past, while also responding to the general public's love for famous members of the community.
- Provide a range of element types, including vertical elements, multi-media, and lighting to provide visual strong interest.



*A range of program types encourage to create vibrancy. A regularly spaced rhythm of program elements to unify the streetscapes (left), one-off placemaking interventions and art (right)*



*This visualization shows how different combinations of programming (notes) can create very different experiences (songs) along the Compton Walk streetscape and is encouraged.*

### Minor ‘Places’

This guideline will allow for and encourage local businesses to utilize portions of The Compton Walk streetscape to better engage with the overall walkway experience and promote a clearer connection and gateway to those businesses. Outdoor dining operations, unique business paving and patterning, and other business improvements will be allowed to push out into the edges the streetscape, identified as Streetscape Zone C.

A series of these smaller enhanced streetscape spaces are envisioned to dot the Compton Walk and act as ‘breadcrumbs’ for encouraging further exploration and discovery throughout the downtown. Minor ‘Places’ will be distinguished from the rest of the streetscape with artistic or special paving elements related to the adjacent business operations. Minor ‘Places’ would be located at key streetscape nodes or building entries to mark adjacent destinations and access points. Several suggested locations have been identified in **Figure 2-10** in red with provisions in gray for others to be implemented over time.



Source: The Apollo Apartments,

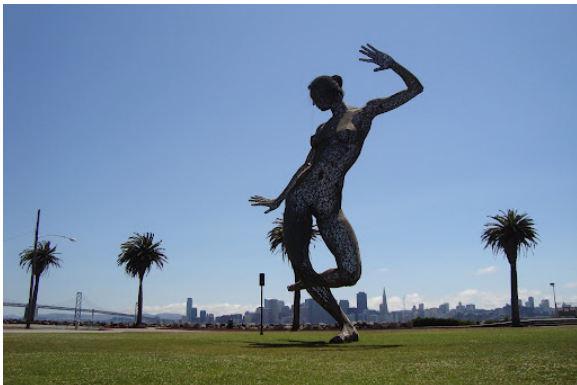




## Major 'Places'

The Compton Walk will provide important connections to the downtown's key civic spaces and parks, which will be experienced as Major 'Places' as part of a comprehensive walk experience. Large, iconic programmatic elements, events, art celebrating Compton greats, and vibrant civic spaces will be featured at these locations to help focus the energy of the downtown at its most important centers. Some of the downtown locations identified for Major 'Places' include, but are not limited to:

- MLK Memorial Plaza (Civic Center) – see Section 2.4
- Metro Plaza (adjacent to Compton Station) – see Section 2.5
- Corner of Compton Blvd. and Tamarind Ave. – see Section 2.5
- Alameda East Greenway Gateway – see Section 2.9
- Willow Plaza – see Section 2.6



## A.4 Greening Features

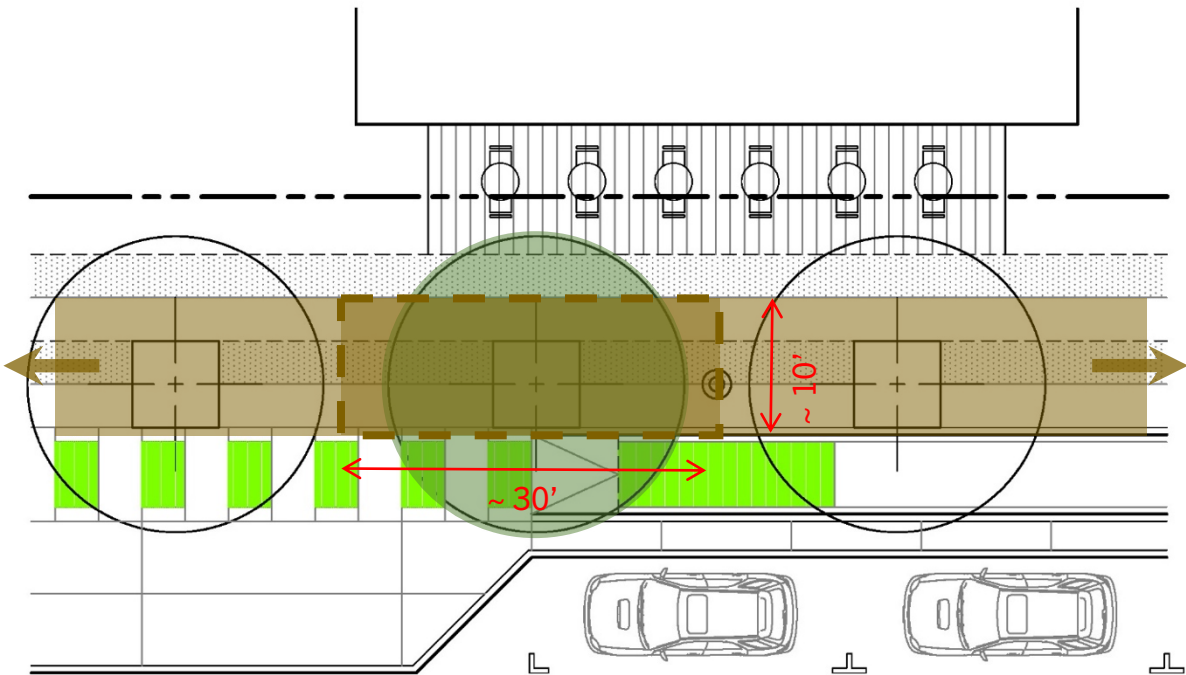


Figure A-3. Compton Walk Landscape Infrastructure Systems.

### Street Trees - Rooted in Compton's Local History.

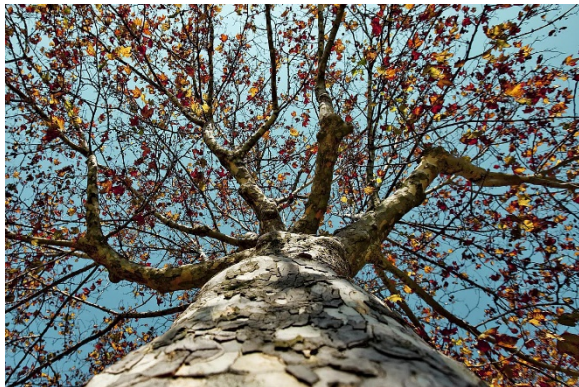
The tree selection for Compton Boulevard is based on the historic Eagle Tree in Compton, which predated the founding of the City of Compton and was a nod to the City's historic rancho origins.

The Eagle Tree, which was located at the southeast corner of Poppy Street and Short Avenue, dated back to the mid-1800's where the tree, already mature at that time, was used as a border marker at the northeastern boundary of the historic Rancho San Pedro, a 118-square-mile tract that covered most of what is now the South Bay and Compton areas, as well as the western part of Long Beach. The tree was used by travelers as an orientation marker and was given its name by eagles that used it as a perch point overlooking the broad surrounding landscape. This large California Sycamore was one of the few remnants of a long past era of California history, however, it was cut down six years ago when it became sick and a hazard. Today the Eagle Tree stump remains with a plaque.

London Planetree (*Platanus acerifolia* 'Columbia') was chosen as the featured street tree for Compton Blvd due to its close similarities to the native California Sycamore (*Platanus racemosa*) and because of its better overall suitability as a streetscape tree, with a more upright growth habit and superior disease resistance. London Planetree was also favored for its large leaves and thick canopy, providing shade during the hottest months of the year. The trees' deciduous nature will provide interesting color changing foliage in fall and, with no leaves, allow warming sun to shine through the canopy in the cooler winter months.



*The Eagle Tree –Then.*



*London Planetree (Sycamore).*



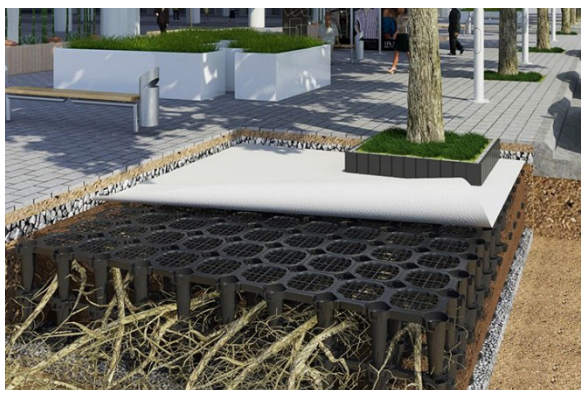
### **Root Trenches - Infrastructure for Supporting Large Street Tree Growth.**

Growing large-size street trees in constrained, urban sidewalk conditions is contingent on the trees having enough below-ground soil volumes to support the large growth. A root trench is a landscape infrastructure system that allows for the maximization of planting soil volume in tight urban conditions.

Root trenches provide a long, narrow volume of soil along the length of the streetscape (parallel to the curb line) and provide an unobstructed below-ground medium for urban street tree roots to grow in. The growth medium for tree roots does not need to be evenly distributed around the tree trunk to be effective, it may be stretched out in a linear direction and still provide a similar, usable soil volume. The root trench system takes advantage of spaces between trees (often under sidewalk hardscape) as part of maximizing the available root growth zone and provides a means of co-sharing root zone spaces between trees. A target of 1,000 cubic feet of planting soil will provide sufficient growth medium for a single 30-foot diameter street tree and will require a roughly 10' wide subterranean root trench.

Maximizing aeration points to the root zones below paving areas will help facilitate root growth and may require a porous paving surface or regular openings in the surface sidewalk. Below-ground structural soil and cellular support systems are often used to support surface paving over root trench zones and would be further developed in detailed design stages for the streetscape implementation. Root trenches also provide excellent opportunities as infiltration points for rainwater and corridor drainage.





Source: WT Burden Landscape.